

RED PITAYA STEM 125-14

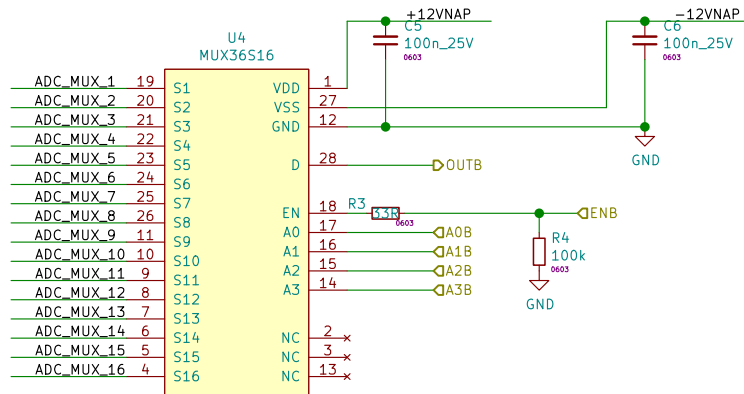
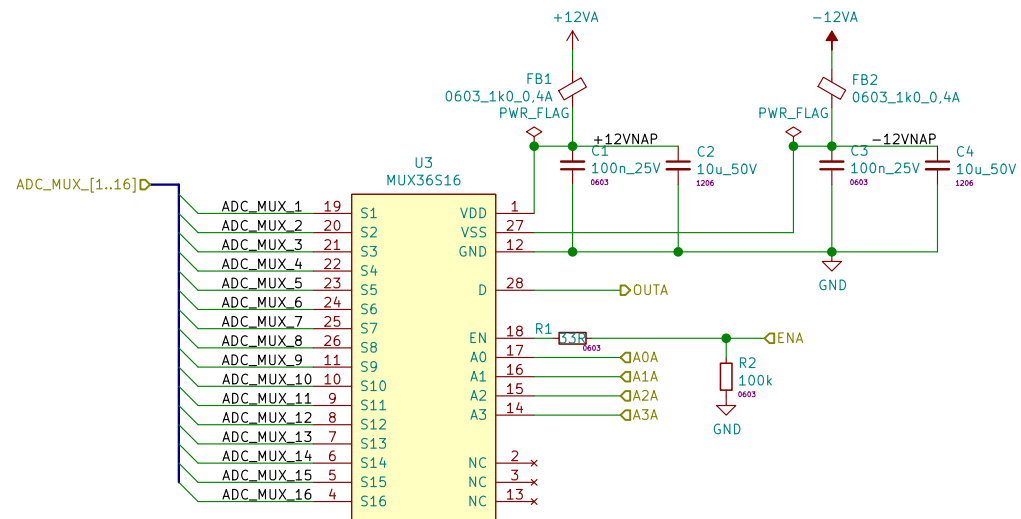
ČMI | Petr Dvořák

Sheet: /RedPitaya/
File: RPSTEM12514.sch

Title: RedPitaya STEMLab 125-14 controller

Size: A4 Date: 2021-10-07
KiCad E.D.A. kicad (5.1.5-0-10_14)

Rev: A
Id: 2/17



ADC_MUX

ČMI | Petr Dvořák

Sheet: /ADC_MUX/

File: ADC_MUX.sch

Title: RedPitaya STEMLab 125-14 controller

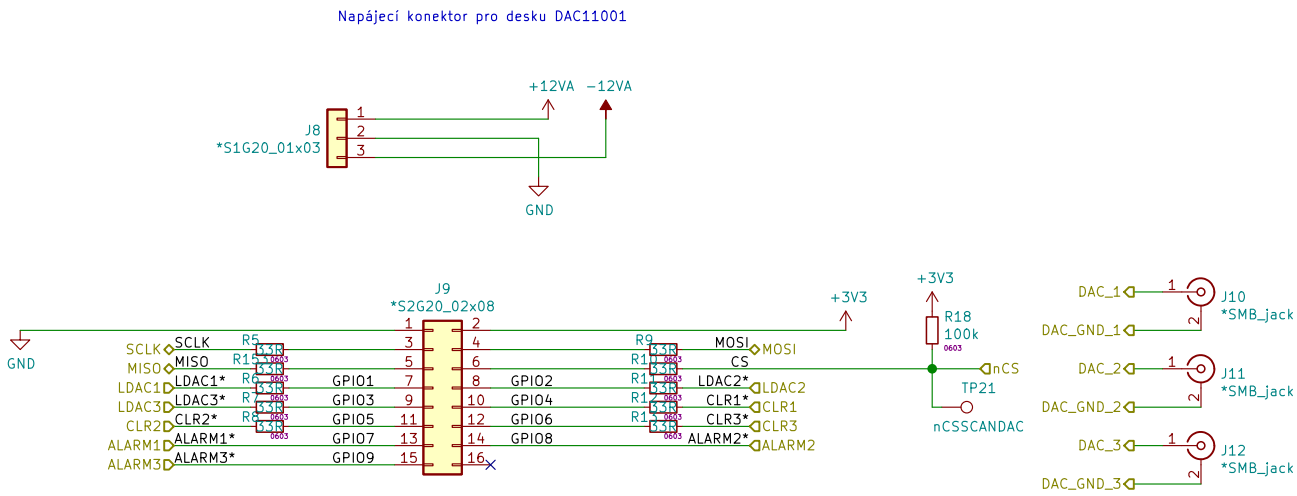
Size: A4

Date: 2021-10-07

KiCad E.D.A. kicad (5.1.5-0-10_14)

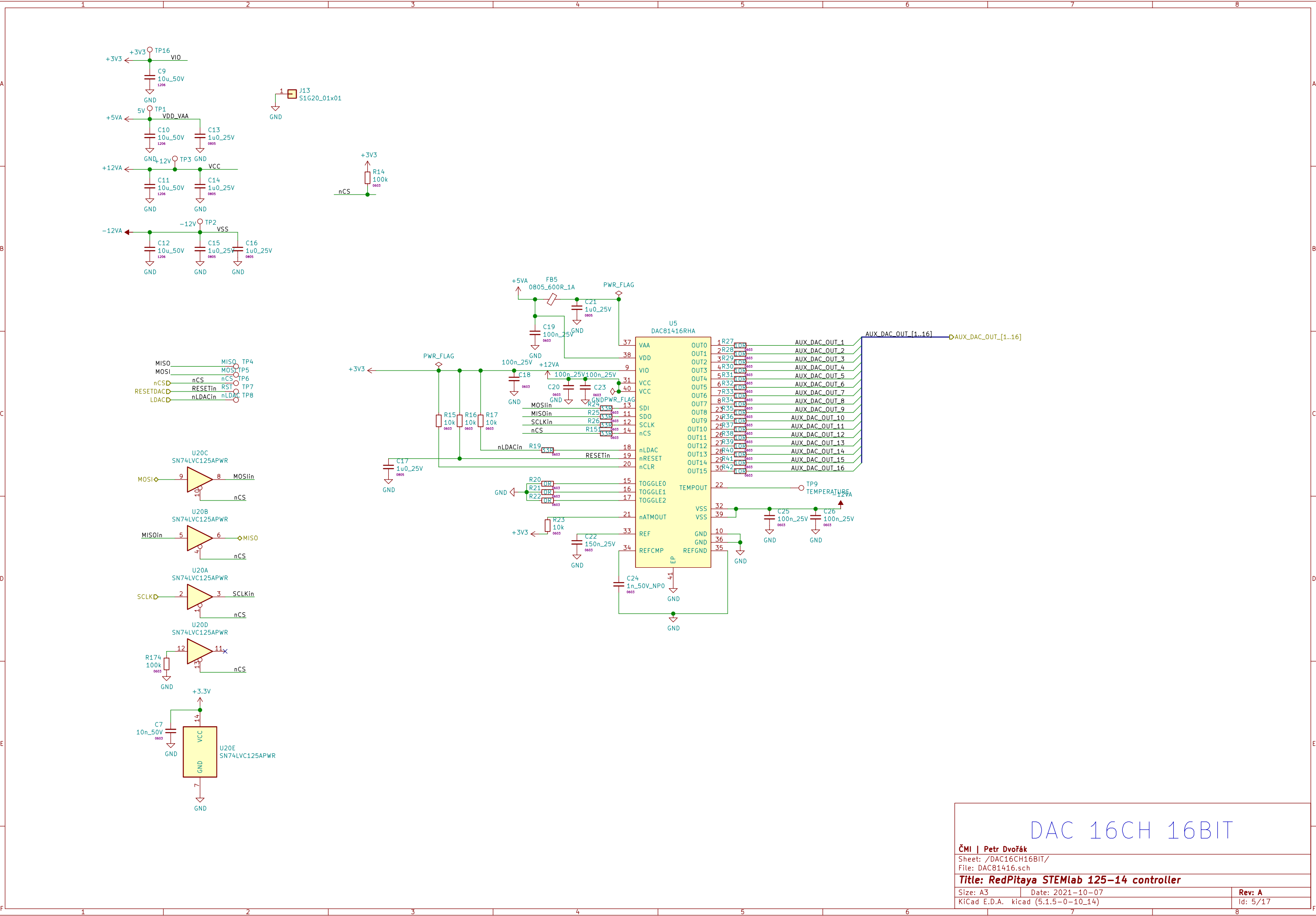
Rev: A

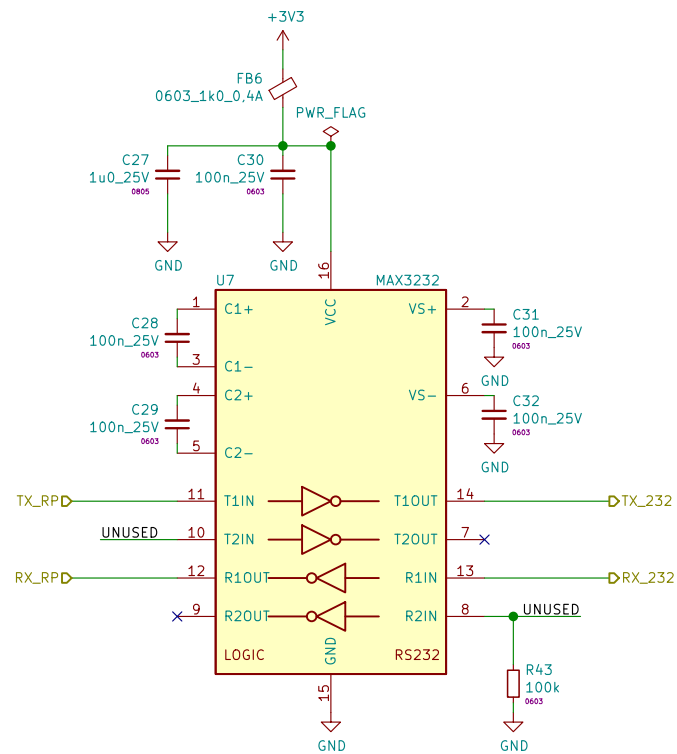
Id: 3/17



DAC 3CH 20BIT

ČMI Petr Dvořák		
Sheet: /DAC3CH20BIT/ File: DAC11001.sch		
Title: RedPitaya STEmlab 125–14 controller		
Size: A3	Date: 2021–10–07	Rev: A
KiCad E.D.A. kicad (5.1.5–0–10_14)		Id: 4/17





RS232

ČMI | Petr Dvořák

Sheet: /RS232/

File: RS232.sch

Title: RedPitaya STEMLab 125-14 controller

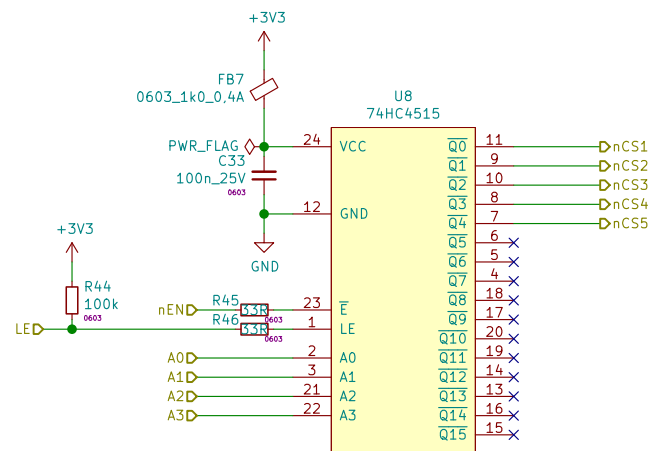
Size: A4

Date: 2021-10-07

Rev: A

KiCad E.D.A. kicad (5.1.5-0-10_14)

Id: 6/17



CS ENCODER

ČMI | Petr Dvořák

Sheet: /CSDECODER/

File: CSDECODER.sch

Title: RedPitaya STEMLab 125-14 controller

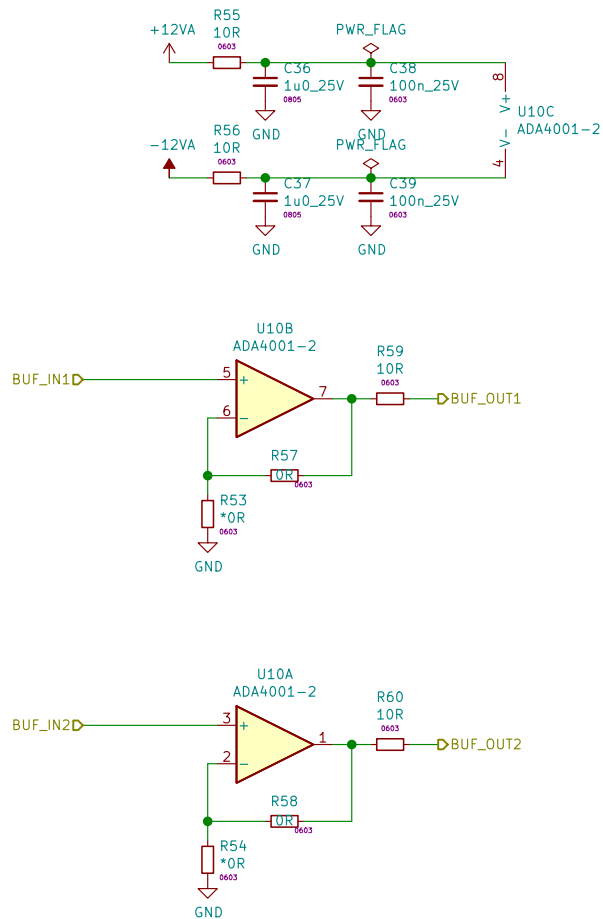
Size: A4

Date: 2021-10-07

Rev: A

KiCad E.D.A. kicad (5.1.5-0-10_14)

Id: 7/17



ANALOG BUFFER

ČMI | Petr Dvořák

Sheet: /OUTPUT_BUFFER/

File: ABUFFER.sch

Title: RedPitaya STEMLab 125-14 controller

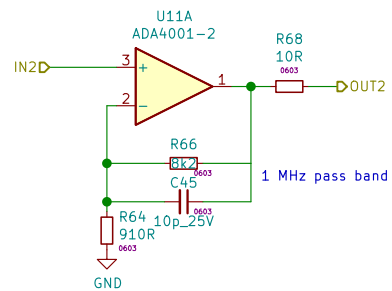
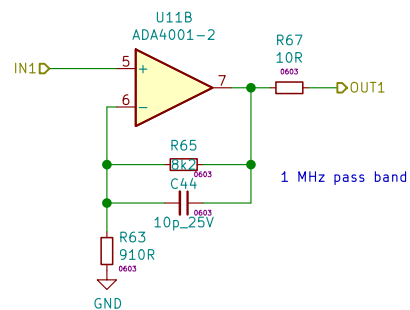
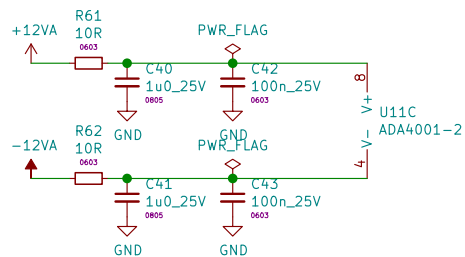
Size: A4

Date: 2021-10-07

Rev: A

KiCad E.D.A. kicad (5.1.5-0-10_14)

Id: 9/17



ANALOG GAIN 10x

ČMI | Petr Dvořák

Sheet: /GAIN10AMP/

File: GAIN10X.sch

Title: RedPitaya STEMLab 125-14 controller

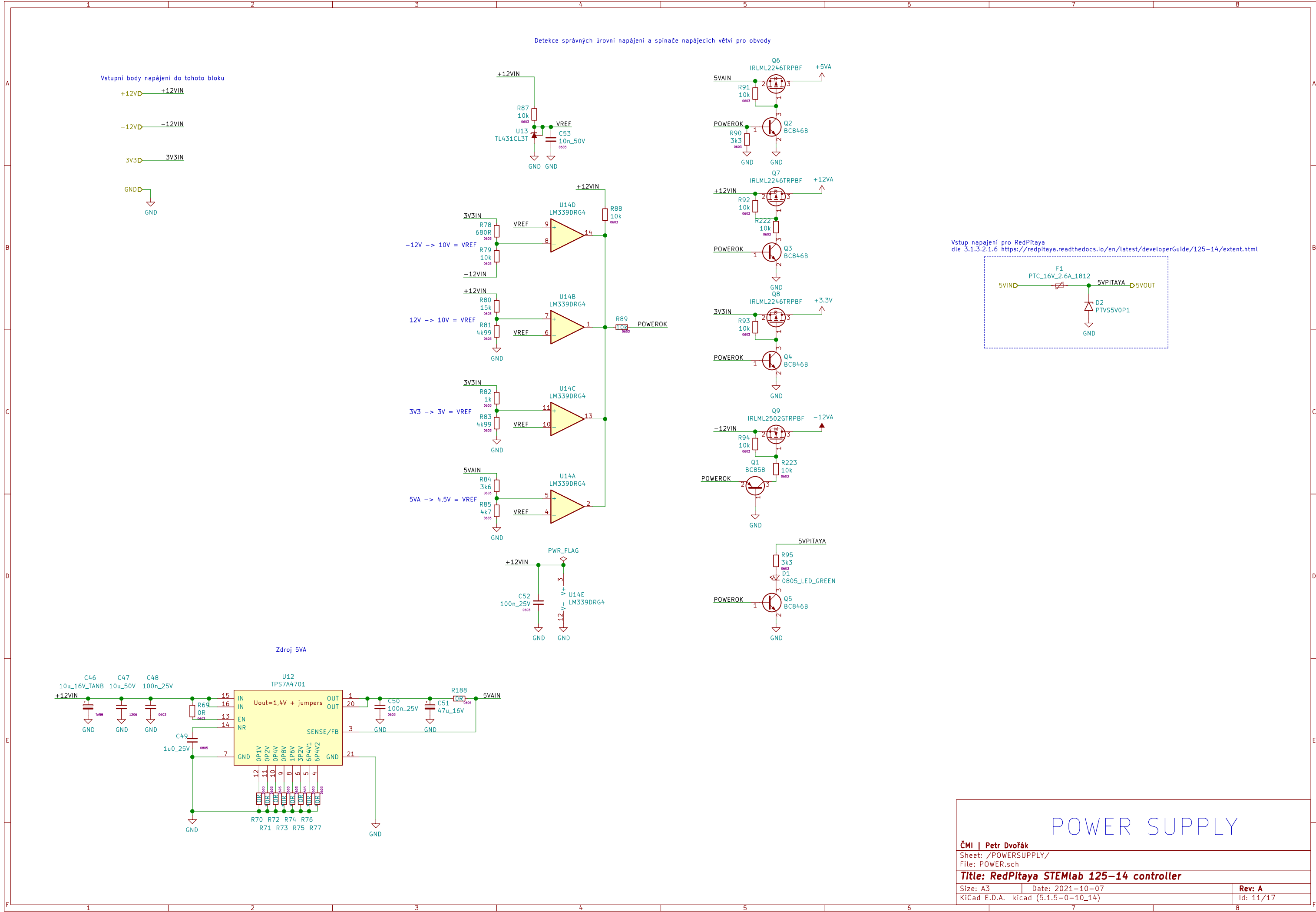
Size: A4

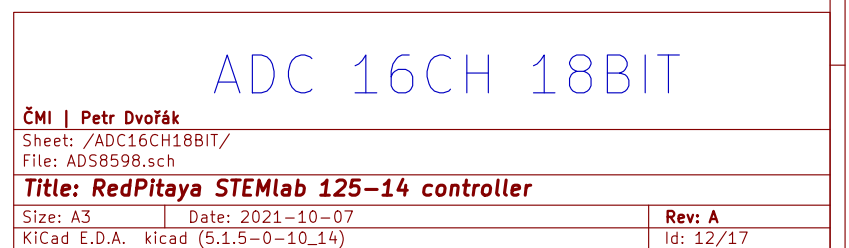
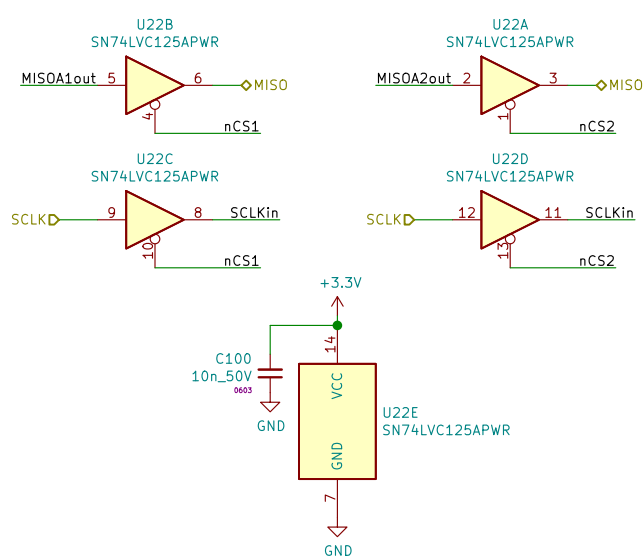
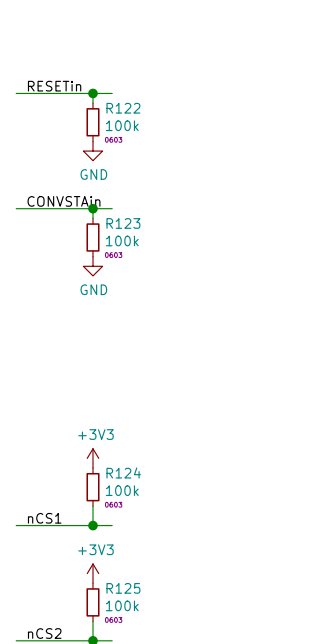
Date: 2021-10-07

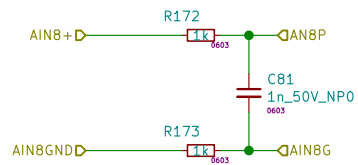
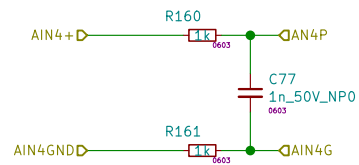
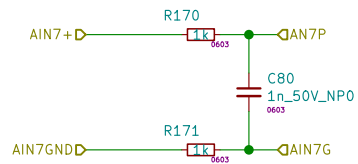
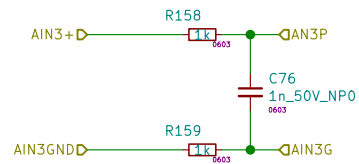
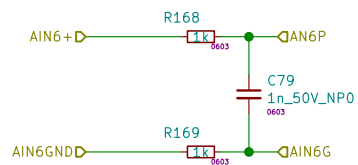
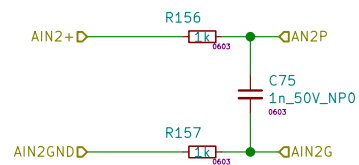
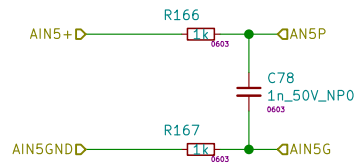
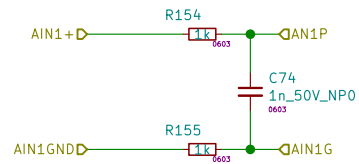
Rev: A

KiCad E.D.A. kicad (5.1.5-0-10_14)

Id: 10/17







Vstupy pro ADC

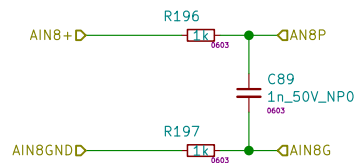
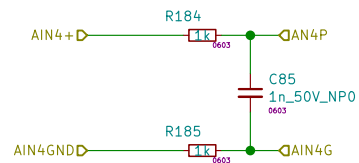
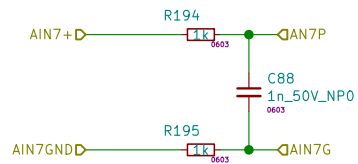
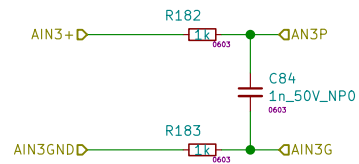
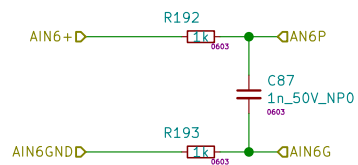
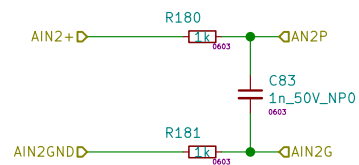
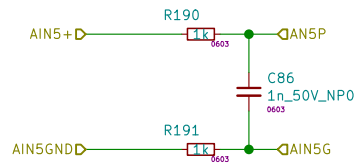
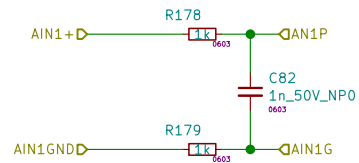
ČMI | Petr Dvořák

Sheet: /ADC16CH18BIT/Vstupy1-8/
File: ADS8598_INPUTS.sch

Title: RedPitaya STEmlab 125-14 controller

Size: A4 Date: 2021-10-07
KiCad E.D.A. kicad (5.1.5-0-10_14)

Rev: A
Id: 13/17



Vstupy pro ADC

ČMI | Petr Dvořák

Sheet: /ADC16CH18BIT/Vstupy9-16/

File: ADS8598_INPUTS.sch

Title: RedPitaya STEmlab 125-14 controller

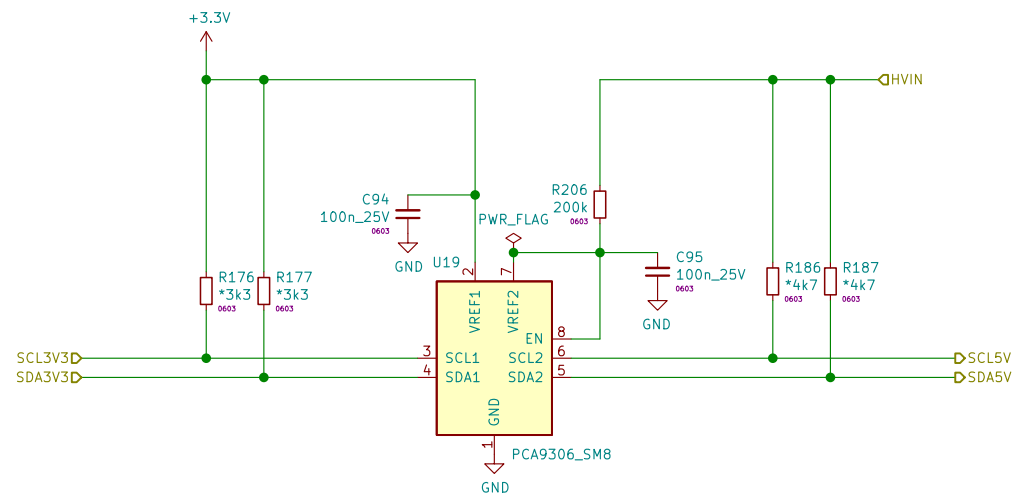
Size: A4

Date: 2021-10-07

Rev: A

KiCad E.D.A. kicad (5.1.5-0-10_14)

Id: 14/17



I2C LEVEL SHIFTER

ČMI | Petr Dvořák

Sheet: /I2C_LEVEL_SHIFTER/

File: LEVELSHIFTER.sch

Title: RedPitaya STEmlab 125-14 controller

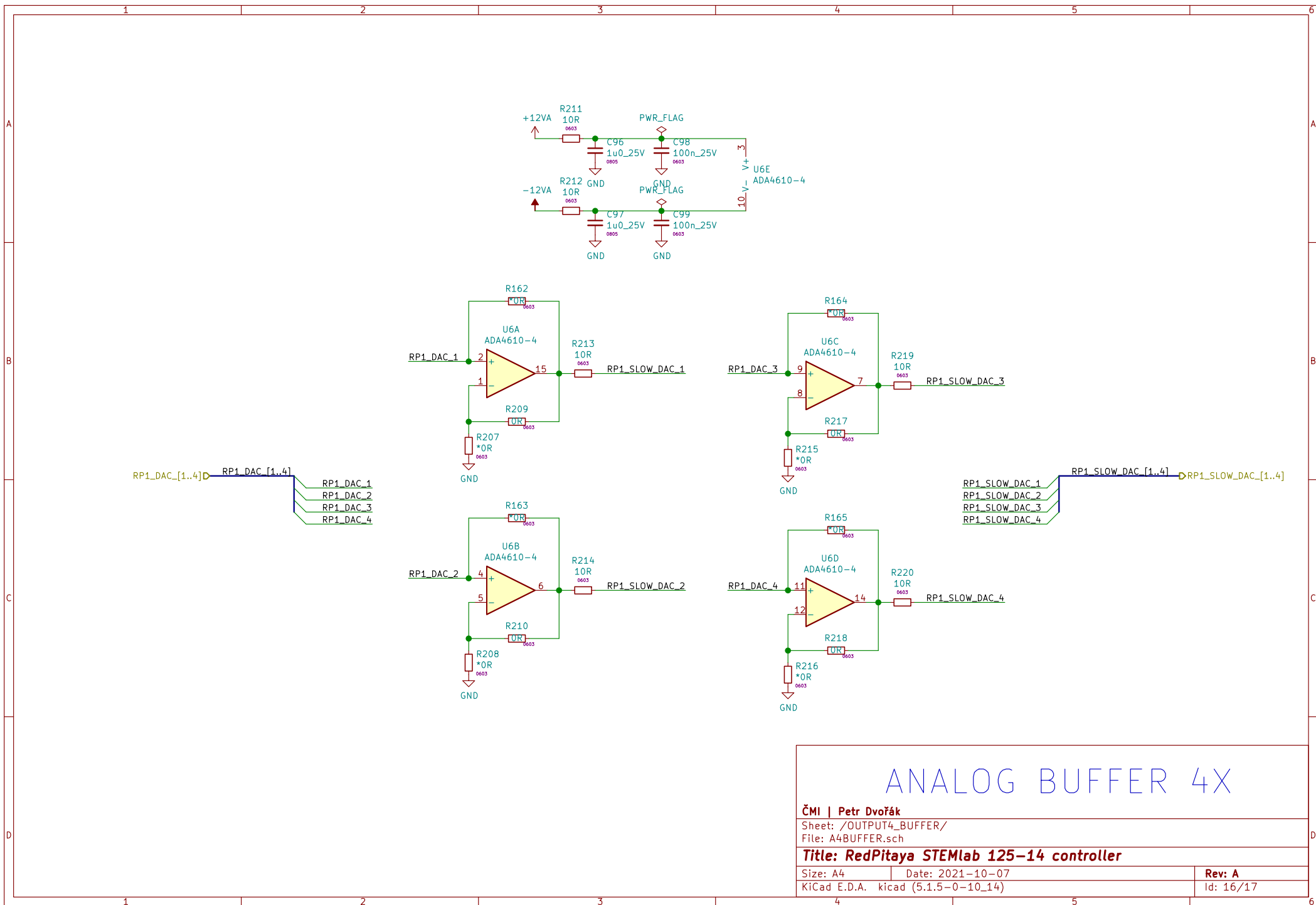
Size: A4

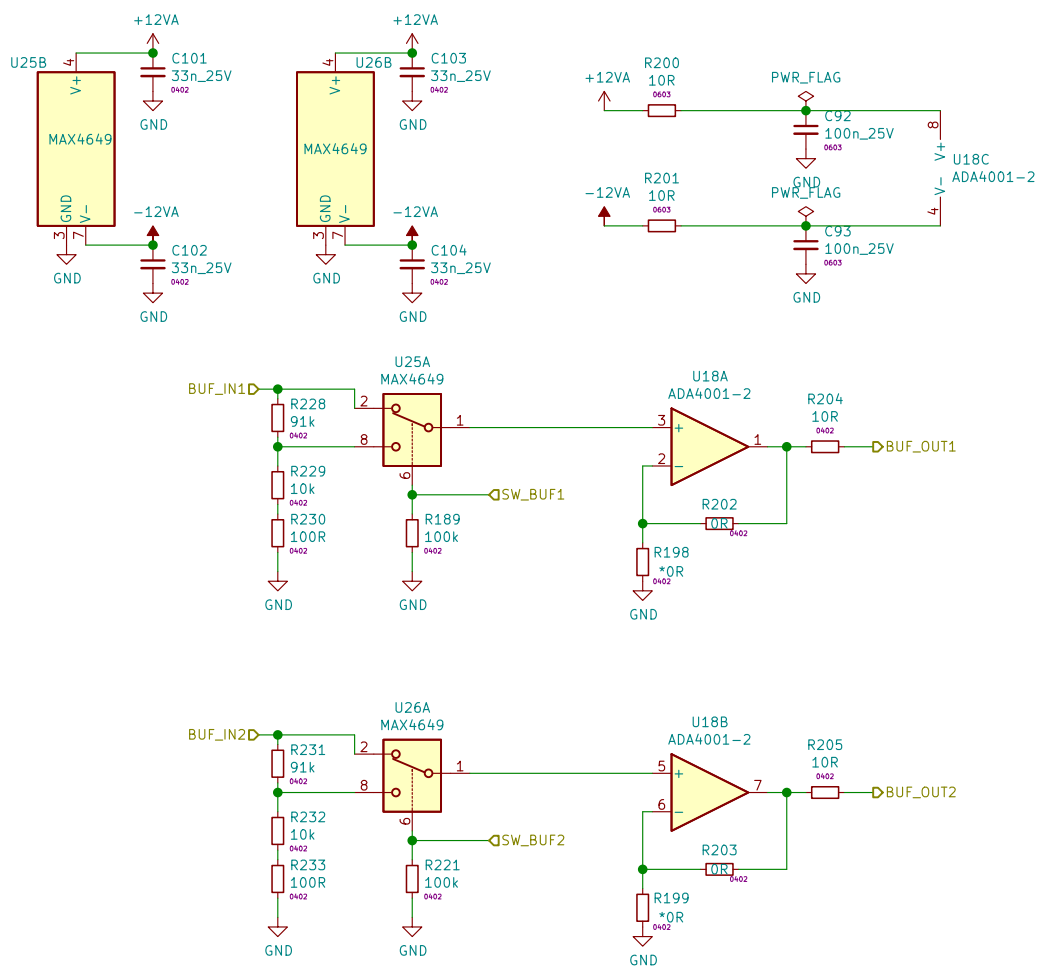
Date: 2021-10-07

Rev: A

KiCad E.D.A. kicad (5.1.5-0-10_14)

Id: 15/17





ANALOG BUFFER

ČMI Petr Dvořák		
Sheet: /INPUT_BUFFER/		
File: ABUFFER_SW.sch		
Title: RedPitaya STEmlab 125-14 controller		
Size: A4	Date: 2021-10-07	Rev: A
KiCad E.D.A. kicad (5.1.5-0-10_14)		Id: 17/17